

Quarantine – Susan & Darren Tech Spec.

Information for Venues.

General:

Susan & Darren is an event in 3 parts:

1. Before the performance element, audience members are invited to join a **dance workshop** in the space led by Darren Pritchard. This is advertised in advance and ticketed on a first-come, first-served basis for a **maximum of 12 audience members**. Participants in the workshop learn a dance which becomes part of that night's show. ***They must not be told this in advance – Darren reveals this in the workshop.*** The workshop is held in working light and the sound operated by the performer. **This lasts approximately 1 hour.** There is then a 30 minute break.

2. The performance combines text, dance and video on 6 TV monitors at the rear of the stage. There are two performers. Audience members seated at a table are asked to help create a buffet for the third part of the evening. **This lasts approximately 1hr 30mins.**

3. The final part of the event is a party in the space. There is a buffet including sandwiches prepared during the show and music to dance to. **The party lasts 1 hour.** Ideally, the audience should be able to buy drinks from the theatre bar and bring them back into the space.

The show has an **audience capacity of approximately 100**, although this will be discussed with individual venues in advance.

Food:

As part of the show the audience seated around a kitchen table help create sandwiches using pre-prepared ingredients. Audience members may only participate if they are wearing disposable gloves which we supply and are supervised by our Stage Manager who has a level 2 Food Standard qualification. These sandwiches are part of a buffet which the audience can eat during the third part of the show; food allergy notices are clearly visible around the space. We have two refrigerators for the safe storage of foodstuffs. All pre-prepared foodstuffs are purchased at the venue.

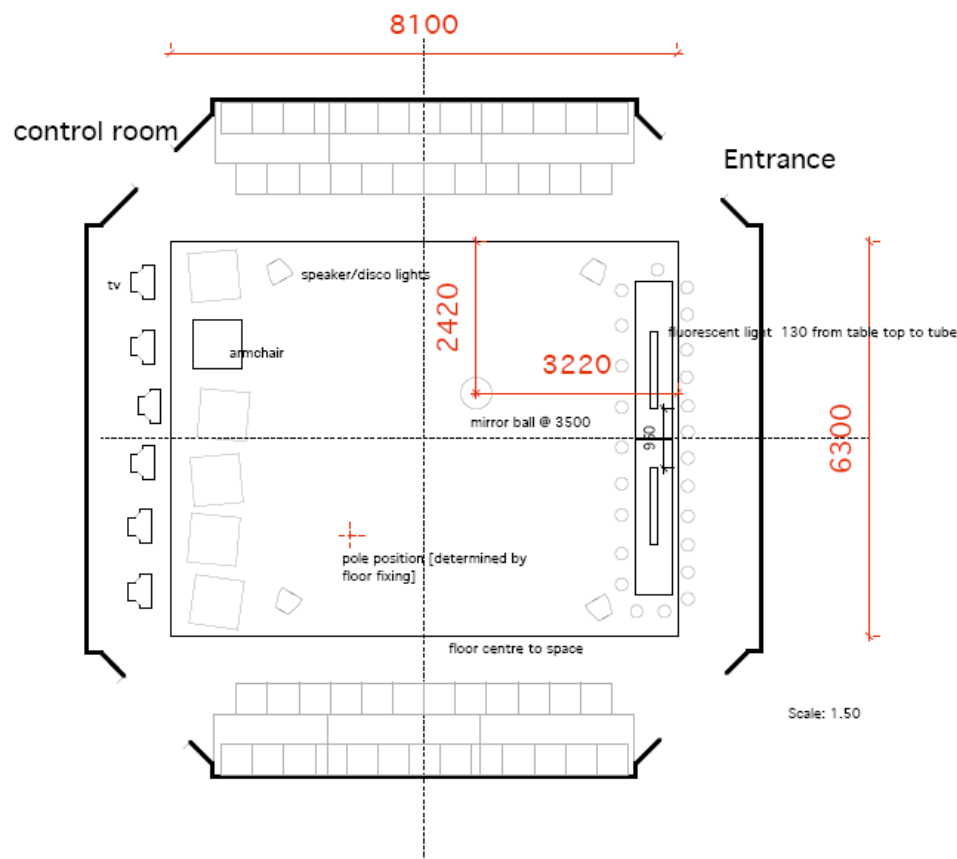
The venue should supply a suitable area for this food preparation; a clean dressing room or green room with a sink is usually sufficient.

The Space:

“Susan and Darren” is played in the round, we tour a 8.1m x 6.3m ‘FlorLok’ Parquet marquee dance floor, to facilitate this the venue’s floor must be flat and clean. This floor has a metal strip all the way around it so presents no trip hazard. **Not this is not a “Roll up” vinyl dancefloor**, it comes in sections 90cm x 90cm. Details of FlorLok can be found here:

<http://www.portablefloormakers.co.uk/florlok.htm>

The following ground plan should give a good idea of the layout of the show, **note it is a generic plan for information only**, whilst the stage layout is fixed the seating banks will be discussed with individual venues.



1: We tour two large “kitchen” tables; these are 2.50m long x 0.6m wide x 0.95m high. These can present an access problem if there are tight corners or stairs between the get in and the space. These tables are positioned at one end of the space; they have 14 stools around them which we also tour. **These 14 stools are used as audience seating.**

2: We tour a 4.8m dance pole, this is a polished aluminium scaffolding bar. It is secured at its base to our dance floor using a key clamp base which is permanently attached to the floor. It must be securely attached at the top. **In venues without a fixed grid a suitable fixing point must be found.** In spaces where the pole needs to be longer than 4.8m we can use a scaffold

extension and a scaffolding joiner. Where this extension is required we use 4 steel “guy ropes” that are attached to the pole at 4.6m and run off to fixing points in the grid with appropriate tensioners. All our flying equipment is appropriately tested and rated.

3: On the two opposite sides of the floor are two seating banks. As shown on the plan one of these consists of two rows of seats, the rear of which is raised on steel deck. **These must be supplied by the venue; we do not tour these seats or any steel deck.** On the opposite side the seating bank is ideally created using the bottom rows of an existing seating block or bleacher style seating unit - this will be discussed with individual venues.

4: On the fourth side of the space are 6 x Televisions which show footage from 6 x DVD players, we tour all this AV equipment and cabling.

Sound:

We tour all sound Playback, Mixer, Amps, Speakers and Cables. The Sound and AV is operated from the floor of the space - we require a clean power supply for this. We also require a communications (Cans) system from this operation position to the lighting position.

Lighting:

A Re-lights plan will be completed for each venue. The following information is therefore general and specific equipment details will be discussed with the venue. **Please note that as “Susan and Darren” is played in the round we are not able to use existing “fixed rigs” in venues.**

Ideally the shows needs the following or equivalent:

- 18 x CP62 Parcan
- 28 x 1Kw Fresnels
- 2 x 500w Fresnels
- 5 x Source 4 (or similar) 15/30 profile all **with Iris**
- 6 x Source 4 (or similar) 36 degree profile fixed lens

The show needs 48 ways of dimming, including house lights. We tour 2 fluorescent strip lights, which need to be flown above the kitchen table (as marked on the plan), a glitter ball and 4 x “sound to light” disco effect units. **We tour all the colour. We have discs for a Strand 500, ETC or Congo desk.**

The show uses a GL300 smoke machine, which is used once at the top of the show just before the audience enters.

Surtitles:

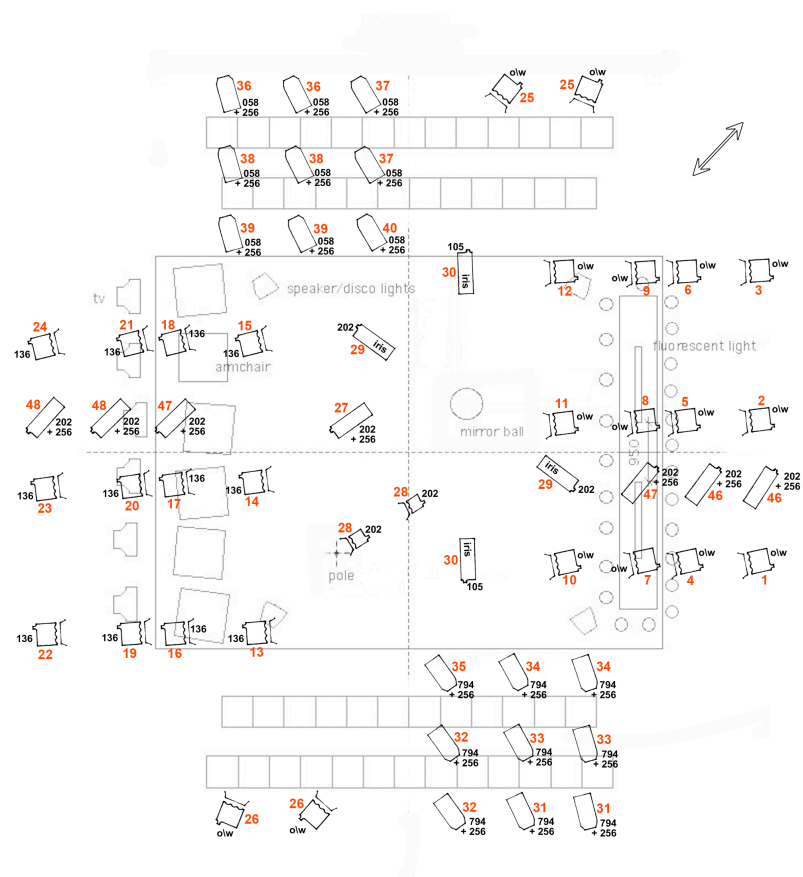
Where requested by a venue surtitling is available in English. It is operated by our stage manager during the performance and is projected above each seating bank. The venue must provide a suitable black projection surface above each seating bank – minimum size 3m long x 1m high. We provide a laptop to run the surtitles but require 2 x Good quality Data Projectors (minimum 3500ansi Lumens) with flying brackets and appropriate VGA cable to the operating position.

Generic Lighting Plan:

Note this is for information only, exact lantern position and type will be discussed with each venue and a Re-light plan sent prior to arrival.

quarantine : susan and darren

quarantine : susan and darren



All colours marked = LEE

058 (lavender) : @ 9 x par

105 (orange) : @ 2 x profile

136 (pale Lavender) : @ 12 x fresnel

202 (half CT blue) : @ 2 x fresnel + 9 x profile

794 (pretty 'N pink) : @ 9 x par

256 (half hampshire) : @ 18 x par + 7 x profile

disco boxes x 4: 41-44 (non-dim: on/off @ 10%)

table fluorescents x 2: 45 (non-dim: on/off @ 10%)

disco boxes x 4: 41-44 (non-dim: on/off @ 10%)

table fluorescents x 2: 45 (non-dim: on/off @ 10%)

202 (half CT blue) : @ 2 x fresnel + 9 x profile

794 (pretty 'N pink) : @ 9 x par

256 (half hampshire) : @ 18 x par + 7 x profile

Schedule and Staffing:

We travel with 6 people; In Addition to the **2 Performers** we have a **Production Manager** who operates sound and AV, a **Lighting Technician** who operates lighting, a **Stage Manager** and an **Artistic Director**. During performances we are entirely self contained and require no operators or house technicians (other than one on call and FOH staff).

Our set and Technical equipment travels in 1 van – a **3.5 tonne Luton with tail lift, this is 6.90m long and 3.40m high**. A second van is required to transport our dance floor – This is a long wheel base Transit. **We require parking for both of these vehicles.**

The venue should provide 2 dressing rooms with appropriate shower facilities etc.

We require a minimum of **2 x crew members** to assist with the **get in and get out**. During Day 1 we require 2 x crew members to assist with focussing and plotting the LX. This can go down to 1 x crew member to support on Day 2.

The following schedule assumes a full 10am – 10pm working day and that a Pre-Rig has been achieved prior to the arrival of the company. It assumes a 7.30pm show.

Day 1:

10.00 – 13.00	Company Arrive and Unload. Lay floor.
13.00 – 14.00	<i>Lunch.</i>
14.00 – 15.30	Finish Get in, Dance pole Rigged.
15.30 – 18.00	LX Focus, Sound & AV rig.
18.00 – 19.00	<i>Dinner.</i>
19.00 – 22.00	LX Focus and plot to finish, Sound & AV rig to finish.

Day 2:

10.00 – 12.00	Technical time on stage
12.00 – 13.00	Sound Check
13.00 – 14.00	<i>Lunch.</i>
14.00 – 17.00	Rehearse On Stage
17.00 – 18.00	<i>Dinner.</i>
18.00 – 19.00	“Susan & Darren” Dance workshop in the space.
19.30 – 22.00	“Susan & Darren” Performance

The get out takes approx 2hrs. (Depending on access.)

For further information please contact:

Greg Akehurst // Production Manager - Quarantine.

greg@qtine.com // +44 (0) 7931 518485