



Table design commission – open call

Design brief and guidelines

Manchester-based theatre company Quarantine is looking to commission a dining table that will play a central role in an exciting new artistic project.

Responding to the extraordinary growth and change that has gripped Manchester in recent years, Tenancy is a 12-month project taking place in a house on the border of Manchester and Salford.

A kitchen table is the heart of a home and this table will be a central gathering point for this project. It will be where neighbours meet over coffee; artists dream up new ideas; and people gather to imagine the future.

This commission is for design and delivery, so as well as a great idea you must also be able to realise it – either by yourself or by working with others.

This commission is made possible with the support of Tom Bloxham and Urban Splash.



View of Irwell Riverside (Photo: Sarah Hunter)

The brief

The table should be able to seat up to 16 people.

It will be used for a wide variety of things from eating and working, to conversations and making plans. It might be where we host dinners for artists or pore over blueprints with city officials. Flexibility is important, so ideally the table will be extendable or adaptable in some way.

The project is taking place in a new-build home in the Urban Splash development in Irwell Riverside, Salford. It should complement the contemporary design of the house, while being a bold and interesting centrepiece for the project.

Find out more about the Irwell Riverside development via [Urban Splash](#).

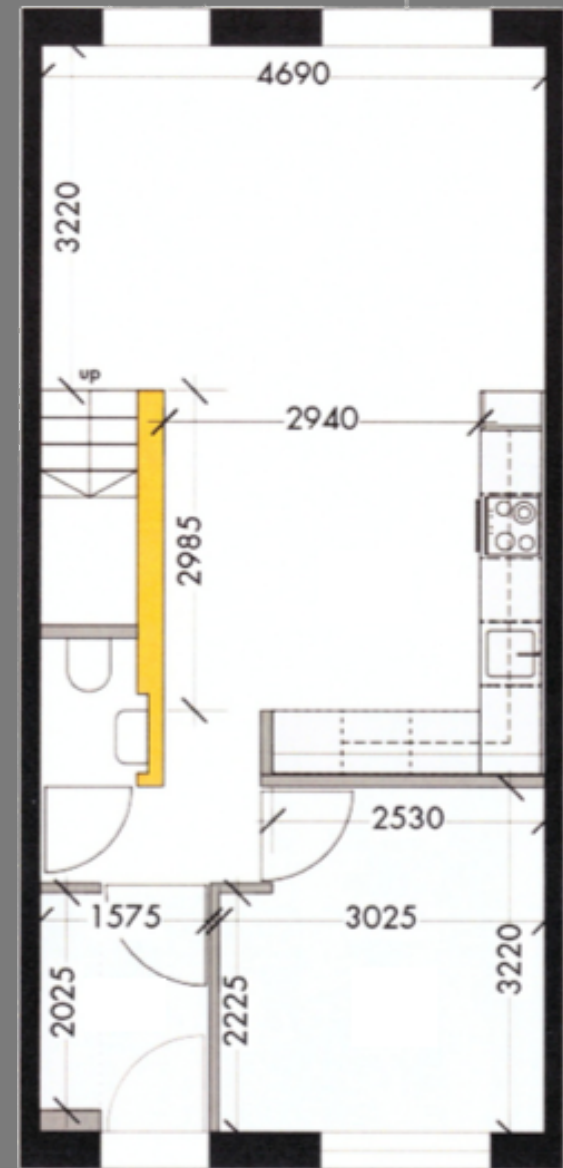
The table will sit in the open-plan living space of the house on the ground floor. The space is approximately 2940mm wide x 6205mm long. The maximum dimensions the table can be are: 1120mm wide x 4385mm long.

Total commission: £2,000-£3,000 (depending on materials) for design, realisation and delivery. Must cover design fees, materials and construction, and transport to the house.

Please note: this open call is restricted to those who live, study or work in Greater Manchester.

The winner of the commission will be invited to visit the house to see the space and assess access routes before finalising the design.

Timeline	
Deadline for submissions	17 September, 12 noon
Successful commission announced	28 September
Visit to house	Early October
Completion and installation	Early November



How to submit a proposal

When submitting your proposal, please include:

- Visuals of your design concept
- Detailed information about the design dimensions and materials you will use
- An explanation of the ideas behind your design – why you think it will work well in the space; how it will meet the use requirements; why you think it fits with the project ideas
- Information about you, your connection to Greater Manchester, your background and previous relevant work
- Details of how you will realise the design including any other companies/people you will work with
- Proposed budget and timetable.

Please email your submission to: info@qtine.com by Monday 17 September 2018, 12 noon.

If you have any questions or require any further guidance, contact Frances Richens, Communications & Development Manager for **Quarantine** via frances@qtine.com or tel: 0161 839 4392.

About the project: Tenancy

Responding to the extraordinary growth and change that has gripped Manchester in recent years, **Tenancy** is a 12-month artistic project running from autumn 2018.

Twenty years ago, a few thousand people lived in and around Manchester city centre. This figure has risen to over 50,000.

Quick to meet demand, developers are creating new homes at an unprecedented rate. But as cranes and high-rise flats begin to tower over the city's skyline, there's been a visible rise in the number of people sleeping rough on the streets below.

Tenancy will explore what it's like to live in a city negotiating rapid change and what is happening to neighbourliness amid this paradox of boom and crisis. It will examine how this bright new city is taking shape, and ask how we can best live together.

Curated and produced by **Quarantine**, **Tenancy** will invite artists from the UK and further afield to take up residence in a brand-new property on the border of Manchester and Salford. Some may stay for a series of weekends, others for weeks at a time. Each artist will get to know the area and their neighbours, and make new work.

Across the year, a series of conversations and other events with neighbours and interested people will take place within the house, reflecting critically on the past and debating plans for the future.

Quarantine is a leading ensemble of artists and producers who make work that engages with everyday life in direct and radical ways. Founded in Manchester in 1998, the company has a long history of making work in the city: Its 7-hour quartet about the human lifecycle **Summer. Autumn. Winter. Spring.** premiered at Old Granada Studios in 2016; and Quarantine's co-Artistic Director Richard Gregory directed **What is the city but the people?**, the extraordinary opening of Manchester International Festival in 2017.

Tenancy is part of **Meet the Neighbours**, a three-year cross-artform project inviting artists into rapidly evolving neighbourhoods in five cities across Europe and North Africa, co-funded by the European Union's Creative Europe programme. **Tenancy** is supported by Slater Heelis, Ben Caldwell, Tom Bloxham, Urban Splash and Bloxham Charitable Trust.